

EcoCart Series

Mobile Powered Workstations



EC Series with PowerSwap
Nucleus® MINI Power System

Boost your Dock to Stock Metrics with the EcoCart

(800) 643-2664

www.MIDCOMServiceGroup.com

EcoCart Workstations

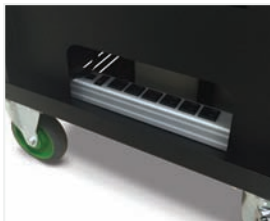
The entry-level EcoCart mobile powered workstation is designed to provide true mobility within a facility, while eliminating unnecessary movement, touches and transportation wastes. This can result in improved dock to stock cycle times in receiving and on-time shipments in your shipping areas.

This lightweight, compact unit is ideal for powering a laptop, barcode printer and scanner for 8+ hours at time.

Benefits Include:

- Reduce labor by as much as \$10K per worker
- Increase receipts by as much as 60%
- Reduce improperly labeled products
- Reduce inaccurate inventories
- Process goods directly at the pallet or on the dock
- See your ROI in less than three months

A number of optional accessories are available and can be easily integrated in seconds for a highly versatile workstation.



Easy-access power strip (for SLA versions)



Integrated push handles for easy maneuverability



Optional slide-out keyboard tray, printer tray and scanner holder



EC Series shown with optional accessories



EC Series with PowerSwap Nucleus® MINI power system

All EcoCart Series Mobile Powered Workstations listed below come standard with (one) top shelf, 5" locking casters, push handles, integrated power system and power outlets.

Technical Specifications

| | | | |
|---|--|---|---|
| Height Adjustable: | Middle shelf adjustable from 20-32" (508-813 mm) | | |
| Shelf: | (1 standard top shelf) 21.75" wide x 20" deep metal (552 x 508 mm) (optional middle shelf) 20" wide x 20" deep metal (508 x 508 mm) | | |
| Capacity: | 60 lbs (27 kg) per shelf evenly distributed | | |
| Casters: | 5 x 2" (127 x 51 mm) rubber wheels, front fixed, rear locking swivel | | |
| Color & Construction: | Black powder coat & steel | | |
| Model Configurations: | EC102NUM * | EC350 | EC380 |
| Typical Devices Powered for 8 Hour Shift: | Laptop or small thermal printer & scanner | Laptop/thin client, small thermal printer & scanner | Laptop/thin client, LCD, small or mid-range thermal printer & scanner |
| Battery Type: | Lithium Iron Phosphate | | Sealed Lead Acid |
| Continuous Output Power (W): | 120 | 450 | 450 |
| Surge Power: | 300 | 900 | 900 |
| Battery Bank (Wh): | 230 | 480 | 1200 |
| Charge Time (Hrs): | 2.5 | 4 | 9 |
| Operating Temp (F): | 50-104° | | 32-95° |
| Weight: | 70 lbs (32 kg) | 110 lbs. (50 kg) | 140 lbs. (64 kg) |
| Dimensions: | 20" long x 21.75" wide x 43" high (508 x 552 x 1092 mm) | | |
| *Requires purchase of (1 or 2) PSNU1.8M battery packs and (1) PWC1M PowerCharge MINI station. | | | |



Contact Us
 800.643.2664
 sales@midcomdata.com
 www.MIDCOMService Group.com